

# Notices to Mariners

**Edition No. 10/2025**  
October 31, 2025



Safety First, Service Always

## Monthly Western Edition

Notices to Mariners – Monthly Western Edition  
Edition No. 10/2025

Aussi disponible en français :  
Avis aux navigateurs – Édition mensuelle de l'Ouest  
Édition n° 10/2025

**Published under the Authority of:**

Canadian Coast Guard Programs  
Aids to Navigation and Waterways  
Montreal, QC H2Y 2E7

For more information, contact [DFO.Notmar-Notmar.MPO@dfo-mpo.gc.ca](mailto:DFO.Notmar-Notmar.MPO@dfo-mpo.gc.ca).

© His Majesty the King in Right of Canada,  
as represented by the Canadian Coast Guard, 2025.

Cat. No. Fs152-9E-PDF (Electronic PDF, English)  
ISSN 2817-0253

Cat. No. Fs152-9F-PDF (Electronic PDF, French)  
ISSN 2817-0261

A web version is available here:

[Notices to Mariners – Monthly Editions](#) (English)

[Avis aux navigateurs – Publications mensuelles](#) (French)

## Explanatory Notes – Notices to Mariners (NOTMAR)

**Geographical positions** refer directly to the graduations of the largest scale Canadian Hydrographic Service chart (unless otherwise indicated).

**Bearings** refer to the true compass and are measured clockwise from 000° (North) clockwise to 359°; those relating to lights are from seaward.

**Visibility** of lights is that in clear weather.

**Depths** - The units used for soundings (metres, fathoms or feet) are stated in the title of each chart.

**Elevations** are normally given above Higher High Water, Large Tide (unless otherwise indicated).

**Distances** may be calculated as follows:

- 1 nautical mile = 1,852 metres (6,076.1 feet)
- 1 statute mile = 1,609.3 metres (5,280 feet)
- 1 metre = 3.28 feet

### Temporary and Preliminary Notices to Mariners – Section 1A of *Notices to Mariners*

These notices are indicated by a (T) or a (P), respectively. Please note that nautical charts are not amended by the Canadian Hydrographic Service for temporary (T) and preliminary (P) notices. It is recommended that mariners chart these corrections in pencil. For the list of charts affected by (T) & (P) notices, please refer to the current [Notices to Mariners - Monthly Summary of Temporary and Preliminary Notices](#) publication.

### Suggestions and Corrections Form

This form is specifically for suggestions and corrections to Notices to Mariners publications. It is available [online](#) and also in [fillable PDF format](#) included with the monthly publication ZIP file.

To submit comments and suggestions on possible improvements to the various publications and services: [DFO.Notmar-Notmar.MPO@dfo-mpo.gc.ca](mailto:DFO.Notmar-Notmar.MPO@dfo-mpo.gc.ca).

To report chart discrepancies and/or corrections to the *Canadian Sailing Directions* booklets: Fill out the [Marine Information Reporting Form](#) and/or email [chsinfo@dfo-mpo.gc.ca](mailto:chsinfo@dfo-mpo.gc.ca).

To report emergencies or navigational hazards: [Contact your nearest MCTS centre](#)

- VHF channel 16 (156.8 MHz)
- MF/HF frequency 2182 kHz/4125 kHz (where available)
- \*16 on a cellphone (where available)

### NOTMAR Website – Monthly Editions, Chart Corrections and Chart Patches

The NOTMAR website allows users to access the [monthly publications](#), [chart corrections](#), and [chart patches](#).

Users can subscribe for free to the [email notification service](#) to receive notifications when charts of interest are updated, including their patches, as well as when a new Monthly Edition of *Notices to Mariners* is published.

In addition, the monthly publication and related files to download, such as chart patches, can be obtained all together through the download of a single ZIP file.

## Explanatory Notes – Canadian Hydrographic Service (CHS)

### Chart Corrections – Section 2 of *Notices to Mariners*

Corrections to nautical charts will be listed in numerical order by chart number. Each chart correction listed applies only to that particular chart. Related charts, if any, will have their own specific correction listed separately.

Users should also refer to CHS *Chart 1: Symbols, Abbreviations and Terms* for additional information pertaining to the correction of charts.

The illustration below describes the elements that will comprise a typical Section 2 chart correction:

	Chart Number	Chart Title	Chart latest new edition date	Horizontal Chart Datum	Last Correction
Weekly Chart Correction Date	1312	Lac Saint-Pierre - New Edition - 10-MAY-2019 - NAD 1983			
	05-AUG-2022				LN/D. 24-SEP-2021
	Amend				46°03'32.4"N 073°03'21.6"W
		(See Chart 1 P16)		(Q2022035) LL(2177)	DFO(6410690-01)
	Chart Action	Chart 1 Reference No.	CCG Reference No.	List of Lights No.	CHS Reference No.

The last correction number is identified with the **LN/D** or **Last Notice to Mariners Number / Date**.

Mariners are advised that only the most critical changes that directly affect safety to navigation are issued in "Section 2 – Chart Corrections." This limitation is required to ensure that charts remain as clear and easy to read as possible. As a result, mariners may see minor discrepancies of a non-critical nature between information in official publications. For example, a small change in the nominal range or focal height of a light may not result in the production of a chart correction in *Notices to Mariners*, but may result in a correction in the [List of Lights, Buoys and Fog Signals](#) publication.

Note: In the case of a discrepancy between information provided on CHS charts relating to aids to navigation, and the *List of Lights, Buoys and Fog Signals* publication, the latter shall be deemed as containing the most up-to-date information.

## Explanatory Notes – Marine Communications and Traffic Services (MCTS)

### Navigational Warnings / Notices to Shipping

The Canadian Coast Guard (CCG) is implementing a number of changes to the aids to navigation system in Canada.

These changes are advertised as Navigational Warnings, formerly called Notices to Shipping<sup>1</sup>, that are broadcast by the CCG, and are then followed up with Notices to Mariners, then charts are updated by hand correction, reprints or new editions.

Mariners are advised that all relevant Navigational Warnings (NAVWARN) should be kept until superseded by Notices to Mariners or through revised charts issued by the Canadian Hydrographic Service (CHS).

NAVWARN are accessible on the applicable regional page on the [CCG Navigational Warnings](#).

CHS is reviewing the impact of these changes with CCG and together are preparing an action plan on the issuing of chart revisions.

For further information, contact your regional NAVWARN Issuing Desk.

<b>Western Region</b> <b>Prince Rupert MCTS Centre</b> “P” Series NAVWARN Canadian Coast Guard Bag 4444 Prince Rupert, BC V8J 4K2 Telephone: 250-627-3070 Email: <a href="mailto:NAVWARN.MCTSPrinceRupert@innav.gc.ca">NAVWARN.MCTSPrinceRupert@innav.gc.ca</a>	<b>Arctic Region</b> <b>*Iqaluit MCTS Centre</b> <i>Operational from approximately mid-May until late December.</i> “A” Series NAVWARN Canadian Coast Guard P.O. Box 189 Iqaluit, NU X0A 0H0 Telephone: 867-979-5269 Facsimile: 867-979-4264 Email: <a href="mailto:NAVWARN.MCTSIqaluit@innav.gc.ca">NAVWARN.MCTSIqaluit@innav.gc.ca</a>
--	---

\*Service available in English and in French.

<sup>1</sup> The expression “Notice to Shipping” was changed to “Navigational Warning” in January 2019.

## Table of Contents

<b>Section 1: General and Safety Information</b>	<b>1</b>
*505/23 Canadian Hydrographic Service – Magnetic Declination Calculations .....	1
*1207/23 Canadian Hydrographic Service – Inappropriate Geographical Names Review Process .....	1
*208/24 West Coast Haida Gwaii – Voluntary Protection Zone for Shipping .....	1
*1105/24 Transport Canada – British Columbia North Coast Waterway Management Guidelines .....	2
*506/25 Anguniaqvia Niqiqyuam Marine Protected Areas (ANMPA), Tarium Nirjutait Marine Protected Areas (TNMPA) and Beluga and Bowhead Whale Protection: Voluntary Avoidance and Slowdown Areas .....	4
*1002/25 Canadian Hydrographic Service – Nautical Charts .....	6
*1003/25 Canadian Hydrographic Service – Electronic Navigational Charts .....	7
*1004/25 Canadian Hydrographic Service – Raster Digital Charts (BSB V3) .....	8
*1005/25 Transport Canada - Ship Safety Bulletins #23/2024 and #14/2025 .....	8
<b>Section 1A: Temporary and Preliminary Notices</b>	<b>9</b>
Reminder – Comment Period for Active Preliminary Notices .....	9
<b>Section 2: Chart Corrections</b>	<b>10</b>
<b>Section 3: Radio Aids to Marine Navigation Corrections</b>	<b>28</b>
No corrections for this section. ....	28
<b>Section 4: Canadian Sailing Directions Corrections</b>	<b>29</b>
<b>Section 5: List of Lights, Buoys and Fog Signals Corrections</b>	<b>30</b>

## Numerical Index of Canadian Charts Affected

This numerical index lists all nautical charts mentioned in this monthly edition of Notices to Mariners. Only charts appearing in Section 2 of this publication require a chart correction. The appearance of charts in all other sections, particularly those related to the correction of other nautical publications, is included here for reference.

Chart No.	Pages	Chart No.	Pages	Chart No.	Pages
3000	<a href="#">10</a>	3886	<a href="#">16</a>		
3412	<a href="#">10</a>	3890	<a href="#">16, 17</a>		
3424	<a href="#">10</a>	3892	<a href="#">17</a>		
3440	<a href="#">10</a>	3893	<a href="#">17</a>		
3441	<a href="#">10</a>	3894	<a href="#">18</a>		
3456	<a href="#">10</a>	3895	<a href="#">18</a>		
3459	<a href="#">11</a>	3908	<a href="#">18, 19</a>		
3463	<a href="#">11</a>	3910	<a href="#">19</a>		
3490	<a href="#">11</a>	3933	<a href="#">19</a>		
3491	<a href="#">12</a>	3941	<a href="#">20</a>		
3492	<a href="#">12</a>	3955	<a href="#">20, 21</a>		
3494	<a href="#">30</a>	3956	<a href="#">21</a>		
3496	<a href="#">12</a>	3957	<a href="#">21</a>		
3512	<a href="#">13</a>	3958	<a href="#">22, 23</a>		
3538	<a href="#">13</a>	3959	<a href="#">23, 24</a>		
3539	<a href="#">13</a>	3960	<a href="#">24</a>		
3540	<a href="#">13</a>	3964	<a href="#">24, 25</a>		
3546	<a href="#">13</a>	3975	<a href="#">25</a>		
3547	<a href="#">14</a>	3980	<a href="#">26</a>		
3549	<a href="#">14</a>	6201	<a href="#">26</a>		
3601	<a href="#">14</a>	6211	<a href="#">26</a>		
3625	<a href="#">6, 8</a>	6215	<a href="#">26</a>		
3646	<a href="#">14</a>	7502	<a href="#">26</a>		
3668	<a href="#">14</a>	7521	<a href="#">26</a>		
3671	<a href="#">14</a>	7573	<a href="#">26, 27</a>		
3683	<a href="#">15</a>	7575	<a href="#">27</a>		
3807	<a href="#">15</a>	7578	<a href="#">27</a>		
3825	<a href="#">15</a>	7621	<a href="#">27</a>		
3853	<a href="#">15</a>	7950	<a href="#">27</a>		
3854	<a href="#">16</a>				
3857	<a href="#">16</a>				
3863	<a href="#">16</a>				
3868	<a href="#">16</a>				
3869	<a href="#">16</a>				

## Section 1: General and Safety Information

---

### **\*505/23 Canadian Hydrographic Service – Magnetic Declination Calculations**

(Recurrent publication of notice \*505/23, originally published in the *Notices to Mariners – Monthly Western Edition 05/2023* publication.)

Mariners are advised that CHS has adopted the harmonized World Magnetic Model (WMM), as found on the NCEI/NOAA website. Old compass rose declination information on CHS navigational products can be updated using the [Magnetic Declination Estimated Value](#) website. While the differences in the model declinations are small each year, they can become more significant over a large period of time.

### **\*1207/23 Canadian Hydrographic Service – Inappropriate Geographical Names Review Process**

(Recurrent publication of notice \*1207/23, originally published in the *Notices to Mariners – Monthly Western Edition 12/2023* publication.)

The records of the Canadian Hydrographic Service could contain geographical names that may be considered inappropriate, offensive and derogatory. Geographical naming authorities are in the process of addressing many offensive place names, the review process is underway. For more information, about inappropriate geographical names, please see the [following announcement](#).

### **\*208/24 West Coast Haida Gwaii – Voluntary Protection Zone for Shipping**

(Recurrent publication of notice \*208/24, originally published in the *Notices to Mariners – Monthly Western Edition 02/2024* publication.)

Reference: Notice \*1105/21 is cancelled.

#### **Voluntary Protection Zone for Shipping, western shore of Haida Gwaii (formerly Queen Charlotte Islands)**

Haida Gwaii's remote location, rugged coastline, variable sea and weather conditions, and rich ecological and cultural heritage make it vulnerable to the potential for pollution from shipping breakdowns and accidents. Increasing the distance vessels travel offshore can increase the amount of time available to address propulsion, steering or other issues, and the likelihood of a towing vessel being able to respond to a vessel in distress or drifting. This in turn reduces the risk of grounding and oil spills.

A Voluntary Protection Zone for Shipping on the western shore of Haida Gwaii is currently in effect. In the Voluntary Protection Zone, commercial vessels of 500 gross tonnage or greater are requested to observe a minimum distance of 50 nautical miles from the western shore of Haida Gwaii with the following exemptions:

#### **Exemptions from requested 50 nm distance:**

- Cruise vessels, which are asked to observe a minimum 12 nm distance from shore;
- Vessels transiting from Alaska to British Columbia or Washington State, or vice versa, through the Voluntary Protection Zone are asked to observe a distance of at least 25 nm from shore
- No minimum distance is requested for tugs and barges (including pushing and towing alongside) or vessels engaged in commercial fishing.
- Vessels to which this bulletin applies are not required to observe requested minimum distances if doing so may compromise navigational, vessel, passenger or cargo safety.



The Voluntary Protection Zone for Shipping coordinates are:

54° 15.436' N	133° 04.788' W
54° 17.572' N	134° 02.484' W
54° 13.614' N	134° 19.427' W
54° 11.786' N	134° 30.841' W
53° 44.036' N	134° 32.677' W
53° 11.118' N	134° 16.412' W
52° 18.483' N	133° 20.917' W
51° 24.590' N	132° 04.081' W
51° 56.158' N	131° 01.830' W

Vessels are requested to adhere to these distances on a voluntary basis and only when it does not jeopardize the safety of navigation, the vessel, the persons onboard, and the cargo.



#### **\*1105/24 Transport Canada – British Columbia North Coast Waterway Management Guidelines**

(Recurrent publication of notice \*1105/24, originally published in the *Notices to Mariners – Monthly Western Edition* 11/2024 publication.)

Reference: Notice \*1004/23 is cancelled.

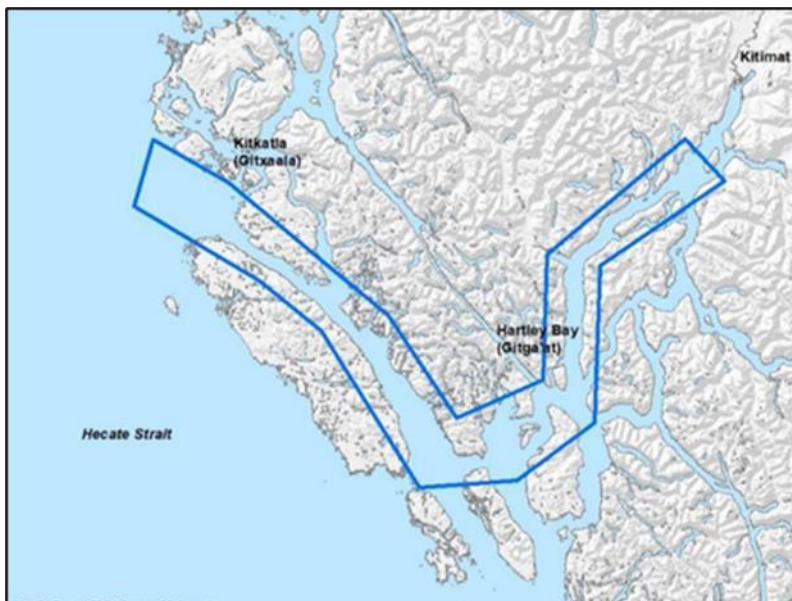
The North Coast Waterway Management Guidelines are voluntary guidelines that aim to improve safety on the water by reducing conflicts between First Nations' marine use activities, such as fishing and shoreline harvesting, and commercial vessels on the shipping route between Kitimat and Browning Entrance. The guidelines came into effect on September 1, 2022, and will be reviewed from time to time.

The guidelines apply to all vessels navigating on the route between Kitimat and Browning Entrance, on the north coast of British Columbia. This area includes:

- Douglas Channel
- Wright Sound
- Lewis Passage
- Otter Channel
- Nepean Sound, and
- Principe Channel

**The complete guidelines document is available at [British Columbia North Coast Waterway Management Guidelines](#).**

Nothing in these guidelines replaces or changes how we apply any Canadian or international laws or regulations, including the Collision Regulations. Furthermore, nothing in these guidelines prevents or limits the master or pilot of a ship from making any decisions to protect the vessel, the crew, or the marine environment.

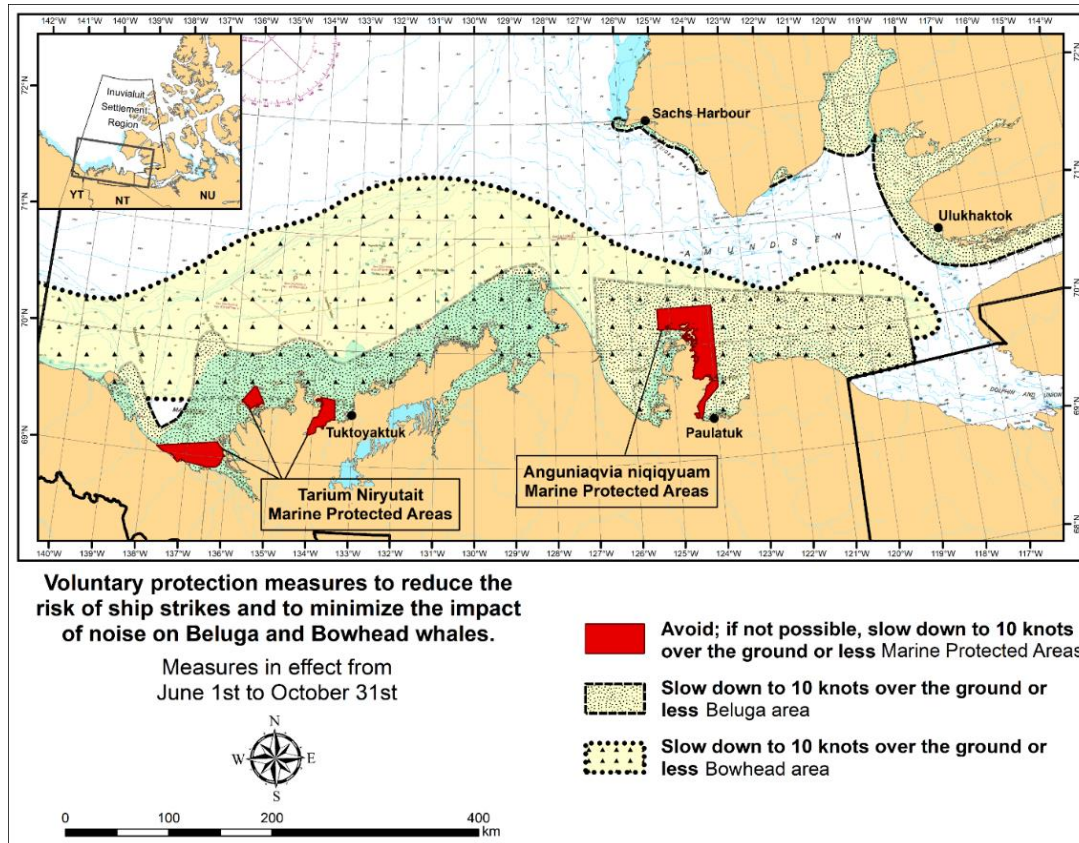


The guidelines include information for:

- all vessels that covers:
  - inshore safety zones
  - routing measures
  - speed reductions
  - guidelines for meeting and passing
    - a special operating area in Wright Sound, and
    - guidelines in case of a mechanical or electrical breakdown
- large commercial ships, including bulk carriers, general cargo vessels, liquid bulk vessels, and passenger vessels
- tugs and barges, and
- vessels operating in First Nations Areas of Concern where you must pay special attention to make sure local community users can transit and use the area safely.

**\*506/25 Anguniaqvia Niqquyuam Marine Protected Areas (ANMPA), Tarium Nirjutait Marine Protected Areas (TNMPA) and Beluga and Bowhead Whale Protection: Voluntary Avoidance and Slowdown Areas**

(Recurrent publication of notice \*506/25, originally published in the *Notices to Mariners – Monthly Western Edition 05/2025* publication.)



The two established Marine Protected Areas (MPAs) in Canada's Western Arctic are located within the Inuvialuit Settlement Region, as such all activities must comply with the [Inuvialuit Final Agreement](#). Protection and preservation of Arctic wildlife, the environment and biological productivity is one of the principles of the Inuvialuit Final Agreement and it is this principle that led the Inuvialuit Regional Corporation and the Inuvialuit Game Council to initiate establishment of the Western Arctic MPAs. The waters in and near the MPAs, and the offshore marine habitats of the Beaufort Sea and Amundsen Gulf, are important summer foraging habitats and travel routes used seasonally (May-October) by the Eastern Beaufort Sea beluga stock, and the Bering-Chukchi-Beaufort bowhead population.

## REGULATORY PROTECTION MEASURES

All whale species are protected under the Marine Mammal Regulations, pursuant to the *Fisheries Act* requiring immediate reporting of accidental contact between a vehicle or fishing gear and a marine mammal to the Minister. Within the boundaries of the MPAs, a general prohibition is set out in the Regulations, pursuant to the *Oceans Act* prohibiting activities that disturb, damage, destroy or remove any living marine organism from the areas. Any accident, including those with a marine mammal within the TNMPA must be reported within two hours after its occurrence, to the Canadian Coast Guard. For marine accidents such as collisions that occur within the ANMPA or outside the MPAs or for any situation involving a marine mammal that is dead or in trouble, report to the Fisheries and Oceans Canada, Inuvik office at (867) 777-7500.

For more information on the ANMPA and TNMPA, including local contacts and species-specific minimum distances, see Section A2 - Notices 5 and 5A.3 of the *Notices to Mariners Annual Edition*.

## VOLUNTARY PROTECTION MEASURES

Voluntary measures are in effect from June 1<sup>st</sup> to October 31<sup>st</sup>. See map above.

These measures apply to merchant vessels, cruise ships, small vessels and adventure craft within the boundaries of the MPAs and the additional identified areas to prevent collisions with whales and to mitigate the underwater noise generated by the vessels. These measures should only be taken when they will not jeopardize navigational safety.

**Avoid (red area):** To reduce the risk of underwater noise disturbance and collisions with whales within the MPAs, vessels should avoid transiting through the MPAs if possible. If passage through this area is necessary, vessels should slow down to a speed not exceeding 10 knots over the ground and post additional lookouts such as a marine mammal observer in order to increase the chances of seeing the whales and thus taking necessary measures to avoid them. If bypassing the whales is not possible, slow down and wait for the animals to move away to a distance greater than 400 metres (0.215 nautical miles) before resuming original speed not exceeding 10 knots over the ground. It is more difficult to see the animals in rain, fog, or in rough sea states, therefore increased caution is recommended.

**Slow down to 10 knots over the ground or less (yellow stippled areas):** To reduce the risk of underwater noise disturbance and collisions with whales within these areas, it is recommended that vessels should slow down to a speed not exceeding 10 knots over the ground, navigate within the marked community supply channels and post additional lookouts.

These voluntary measures are secondary to rights under the [Inuvialuit Final Agreement](#).

### MPA Coordinates

The Tarium Niryutait Marine Protected Areas consist of three areas of the Mackenzie Bay: Okeevik, Kittigaryuit and Niaqunnaq. The three areas are bounded by straight lines and lines following the low water line which connect the following geographical coordinates [Universal Transverse Mercator (UTM) North America Datum 1983 (NAD 83)]

Okeevik Sub Area		
Point	Latitude (North)	Longitude (West)
1	69° 38' 19"	135° 25' 09"
2	69° 38' 03"	135° 25' 11"
3	69° 37' 46"	135° 24' 52"
4	69° 29' 49"	135° 12' 49"
5	69° 30' 45"	135° 16' 56"
6	69° 29' 26"	135° 18' 53"
7	69° 29' 23"	135° 19' 06"
8	69° 28' 07"	135° 20' 25"
9	69° 27' 36"	135° 24' 25"
10	69° 25' 51"	135° 32' 27"
11	69° 26' 32"	135° 34' 54"
12	69° 28' 21"	135° 35' 24"
13	69° 28' 35"	135° 36' 40"
14	69° 28' 39"	135° 37' 58"
15	69° 30' 34"	135° 45' 54"
16	69° 35' 18"	135° 35' 42"
17	69° 36' 00"	135° 22' 10"
18	69° 34' 40"	135° 20' 09"
19	69° 34' 00"	135° 20' 09"
20	69° 34' 00"	135° 27' 39"
21	69° 36' 00"	135° 27' 39"
22	69° 27' 00"	135° 31' 11"
23	69° 27' 00"	135° 34' 45"

Kittigaryuit Sub Area		
Point	Latitude (North)	Longitude (West)
1	69° 35' 10"	133° 48' 26"
2	69° 34' 00"	133° 28' 00"
3	69° 23' 37"	133° 26' 40"
4	69° 20' 34"	133° 40' 37"
5	69° 19' 05"	133° 42' 21"
6	69° 19' 01"	133° 42' 31"
7	69° 20' 39"	133° 43' 20"
8	69° 16' 42"	133° 54' 54"
9	69° 15' 20"	134° 06' 53"
10	69° 16' 33"	134° 05' 56"
11	69° 20' 42"	134° 02' 44"
12	69° 24' 00"	133° 59' 10"
13	69° 24' 34"	133° 53' 49"
14	69° 28' 21"	133° 48' 15"
15	69° 28' 02"	133° 50' 59"
16	69° 33' 20"	133° 47' 29"
17	69° 34' 33"	133° 47' 42"
18	69° 32' 55"	133° 51' 09"
19	69° 32' 56"	133° 51' 54"
20	69° 33' 46"	133° 55' 48"
21	69° 33' 46"	133° 55' 31"

Niaqunnaq Sub Area		
Point	Latitude (North)	Longitude (West)
1	69° 08' 00"	136° 16' 44"
2	69° 04' 25"	136° 07' 45"
3	69° 03' 43"	136° 07' 08"
4	69° 01' 19"	136° 04' 45"
5	69° 01' 14"	136° 04' 45"
6	69° 00' 57"	136° 05' 42"
7	69° 00' 12"	136° 07' 08"
8	68° 57' 00"	136° 10' 00"
9	68° 55' 00"	136° 15' 00"
10	68° 54' 22"	136° 31' 50"
11	68° 55' 00"	136° 38' 33"
12	68° 56' 15"	137° 00' 41"
13	68° 56' 29"	137° 03' 03"
14	68° 55' 48"	137° 11' 00"
15	68° 57' 50"	137° 16' 40"
16	68° 59' 20"	137° 21' 30"
17	69° 03' 09"	137° 44' 54"

The Anguniagvia nqiqyuam Marine Protected Areas consist of two areas in Darnley Bay and Amundsen Gulf in the Beaufort Sea: Zone 1 and Zone 2. The areas consist of the seabed, the subsoil to a depth of five metres and the water column, including the sea ice. The two areas are bounded by straight lines and lines following the low water line which connect the following geographical coordinates [Universal Transverse Mercator (UTM) North America Datum 1983 (NAD 83)].

Zone 1		
Point	Latitude (North)	Longitude (West)
A	69° 21' 07.8"	124° 21' 32.0" approx
B	70° 12' 00.0" approx	124° 31' 55.2"
C	70° 08' 22.0"	124° 41' 45.0" approx
D	70° 09' 09.9"	124° 57' 42.0" approx
E	70° 09' 13.0" approx	125° 05' 28.6"
F	70° 09' 13.2"	125° 17' 53.0"
G	70° 20' 00.0"	125° 17' 53.0"
H	70° 20' 00.0"	123° 54' 17.5"
I	69° 37' 20.6"	123° 54' 17.5"
J	69° 30' 00.0"	124° 15' 34.7"

Zone 2		
Point	Latitude (North)	Longitude (West)
K	70° 04' 15.8"	124° 41' 51.0" approx
L	70° 04' 48.6"	124° 41' 54.0" approx
M	70° 02' 12.9"	124° 35' 23.0" approx
N	70° 02' 12.9"	124° 35' 29.0" approx

**\*1002/25 Canadian Hydrographic Service – Nautical Charts**

Charts	Main Title	Scale	Edition Date	Published	Cat#	Price
Charts Permanently Withdrawn						
3625	Scott Islands					



**\*1003/25 Canadian Hydrographic Service – Electronic Navigational Charts**

S-57 ENC Number	Chart Title	ENC Compilation Scale	Published
<b>New Charts</b>			
CA541Q4A (Edn 1.000)	CA541Q4A	1:6 000	2025-10-24
CA541Q5A (Edn 1.000)	CA541Q5A	1:6 000	2025-10-24
CA542Q4A (Edn 1.000)	CA542Q4A	1:6 000	2025-10-24
CA54GSPA (Edn 1.000)	CA54GSPA	1:11 000	2025-10-10
CA54GSQA (Edn 1.000)	CA54GSQA	1:11 000	2025-10-10
CA55VSSA (Edn 1.000)	CA55VSSA	1:11 000	2025-10-10
CA571257 (Edn 1.000)	CA571257	1:6 000	2025-10-10
CA58XMQA (Edn 1.000)	Port6150N07230W	1:6 000	2025-10-24
CA58XMRA (Edn 1.000)	Port6150N07220W	1:6 000	2025-10-24
CA58XMSA (Edn 1.000)	Port6150N07210W	1:6 000	2025-10-24
CA58XMTA (Edn 1.000)	Port6150N07200W	1:6 000	2025-10-24
CA58YMQA (Edn 1.000)	Port6159N07230W	1:6 000	2025-10-24
CA58YMRA (Edn 1.000)	Port6160N07220W	1:6 000	2025-10-24
CA58YMSA (Edn 1.000)	Port6160N07210W	1:6 000	2025-10-24
CA58YMTA (Edn 1.000)	Port6160N07200W	1:6 000	2025-10-24
<b>New Editions</b>			
CA373234 (Edn 7.000)	Scotch Bonnet Island to/à Cobourg	1:35 000	2025-10-24
CA373504 (Edn 3.000)	Pelly Bay	1:62 500	2025-10-17
CA42QJ6A (Edn 2.000)	CA42QJ6A	1:45 000	2025-10-31
CA431JGA (Edn 2.000)	CA431JGA	1:45 000	2025-10-31
CA431KDA (Edn 2.000)	CA431KDA	1:45 000	2025-10-31
CA448M7A (Edn 5.000)	Transit4600N07400W	1:11 000	2025-10-24
CA448PXA (Edn 3.000)	CA448PXA	1:90 000	2025-10-17
CA44JRRA (Edn 2.000)	CA44JRRA	1:45 000	2025-10-17
CA44US2A (Edn 2.000)	CA44US2A	1:22 500	2025-10-17
CA46CRFA (Edn 3.000)	CA46CRFA	1:45 000	2025-10-17
CA46CRRA (Edn 3.000)	CA46CRRA	1:45 000	2025-10-17
CA46CS2A (Edn 3.000)	CA46CS2A	1:45 000	2025-10-17
CA46NRRA (Edn 3.000)	CA46NRRA	1:45 000	2025-10-17
CA544MCA (Edn 3.000)	Port4560N07350W	1:6 000	2025-10-24
CA548MFA (Edn 3.000)	Port4600N07320W	1:4 000	2025-10-10
CA573253 (Edn 11.000)	Port of Thunder Bay	1:10 000	2025-10-03
<b>Charts Permanently Withdrawn</b>			
CA23MMTA	CA23MMTA		
CA473521	Wakeham Bay and Fisher Bay et les Approches/and Approaches	Cancelled by CA58XMQA	
CA573377	Kangiqsujuaq		

**\*1004/25 Canadian Hydrographic Service – Raster Digital Charts (BSB V3)**

Charts	Main Title	Scale	Edition Date	Published
Charts Permanently Withdrawn				
RM-3625	Scott Islands			

**\*1005/25 Transport Canada - Ship Safety Bulletins #23/2024 and #14/2025**

An updated and new **Ship Safety Bulletins** have recently been posted on the [Transport Canada website](#).

To view or download these bulletins, please click on the links below:

[SSB#23/2024](#) – Extension of the National trial of remote inspections for grain and concentrates in bulk **(Updated)**  
RDIMS# 20495028

[SSB#14/2025](#) – Vessels equipped with Shaft or Engine Power Limitation Systems (ShaPoli/EPL) operating in all waters including Compulsory Pilotage Areas (CPA)

Sign up for [e-Bulletin](#) to receive an e-mail notice each time a new Ship Safety Bulletin is published on our website.

**Contact us at** [marinesafety-securitemaritime@tc.gc.ca](mailto:marinesafety-securitemaritime@tc.gc.ca) or 1-855-859-3123 (Toll Free).

## **Section 1A: Temporary and Preliminary Notices**

---

### **Reminder – Comment Period for Active Preliminary Notices**

No notices applicable for this edition.

#### **Inland Waters**

##### **Temporary Notices**

No notices applicable for this edition.

##### **Preliminary Notices**

No notices applicable for this edition.

#### **Pacific Coast**

##### **Temporary Notices**

No notices applicable for this edition.

##### **Preliminary Notices**

No notices applicable for this edition.



## Section 2: Chart Corrections

### 3000 - Juan de Fuca Strait to/à Dixon Entrance - New Edition - 20-JAN-1989 - NAD 1927

03-OCT-2025

LNMD/D. 25-JUL-2025

Delete	maritime limit (See Chart 1, N1.2)	joining 47°54'06.2"N 129°08'08.9"W 47°54'06.2"N 129°02'07.5"W 48°01'05.2"N 129°02'07.5"W 48°01'05.2"N 129°08'08.9"W and 47°54'06.2"N 129°08'08.9"W DFO(6205253-01)
--------	---------------------------------------	---

Delete	name Endeavour Hydrothermal Vents Marine Protected Area / zone de protection marine du champ hydrothermal Endeavour	48°04'56.8"N 129°04'33.9"W DFO(6205253-02)
--------	--	---

### 3412 - Victoria Harbour - New Edition - 22-NOV-2013 - World Geodetic System 1984

03-OCT-2025

LNMD/D. 03-JAN-2025

Delete	depth of 1.5 metres (See Chart 1, I10)	48°25'08.5"N 123°23'49.3"W DFO(6205262-01)
--------	---	---

Add	depth of 1.1 metres (See Chart 1, I10)	48°25'08.4"N 123°23'49.1"W DFO(6205262-02)
-----	---	---

Add	depth of 5.8 metres (See Chart 1, I10)	48°25'07.1"N 123°23'49.9"W DFO(6205262-03)
-----	---	---

Add	depth of 7.3 metres (See Chart 1, I10)	48°25'05.7"N 123°23'50.2"W DFO(6205262-04)
-----	---	---

### 3424 - Approaches to/Approches à Oak Bay - New Edition - 12-SEP-2003 - NAD 1983

17-OCT-2025

LNMD/D. 25-APR-2025

Affix	patch Download Patch - <a href="https://www.notmar.gc.ca/chsftp/patches/3424_6205333_1_202509171752.pdf">https://www.notmar.gc.ca/chsftp/patches/3424_6205333_1_202509171752.pdf</a>	48°27'00.0"N 123°18'00.0"W DFO(6205333-01)
-------	---	---

### 3440 - Race Rocks to/à D'Arcy Island - New Edition - 01-JUL-2005 - NAD 1983

17-OCT-2025

LNMD/D. 06-JUN-2025

Affix	patch Download Patch - <a href="https://www.notmar.gc.ca/chsftp/patches/3440_6205333_2_202509171751.pdf">https://www.notmar.gc.ca/chsftp/patches/3440_6205333_2_202509171751.pdf</a>	48°28'00.0"N 123°16'00.0"W DFO(6205333-02)
-------	---	---

### 3441 - Haro Strait, Boundary Pass and/et Satellite Channel - New Edition - 01-JUL-2005 - NAD 1983

24-OCT-2025

LNMD/D. 12-SEP-2025

Add	private yellow ODAS/SADO lighted pillar FI (5) Y (See Chart 1, Q58)	48°34'49.6"N 123°21'20.8"W DFO(6205322-01)
-----	--	---

### 3456 - Halibut Bank to/à Ballenas Channel - New Chart - 01-JUL-2011 - NAD 1983

17-OCT-2025

LNMD/D. 11-JUL-2025

Add	private yellow ODAS/SADO lighted pillar FI (5) Y (See Chart 1, Q58)	49°20'09.1"N 123°43'27.2"W DFO(6205320-01)
-----	--	---

**3459 - Approaches to/Approches à Nanoose Harbour - New Edition - 24-OCT-1997 - NAD 1983**

17-OCT-2025

LNMD. 10-MAY-2024

- Add priv description against green port hand pillar buoy, marked P29 49°18'03.4"N 124°12'05.4"W  
(See Chart 1, Qc) (P2025022) DFO(6205248-01)
- Add priv description against red starboard hand conical buoy, marked P30 49°18'01.7"N 124°12'05.9"W  
(See Chart 1, Qb) (P2025023) DFO(6205249-01)

**3463 - Strait of Georgia, Southern Portion/Partie Sud - New Edition - 01-JUL-2005 - NAD 1983**

17-OCT-2025

LNMD. 20-JUN-2025

- Reposition yellow traffic separation scheme lighted pillar buoy Fl Y with racon, from 49°16'34.4"N 123°19'18.4"W  
marked QA to 49°16'31.6"N 123°19'13.8"W  
(See Chart 1, Q61, S3.6) (P2025020) LL(385.5) DFO(6205241-01)
- Add private yellow ODAS/SADO lighted pillar buoy Fl (5) Y 49°03'41.0"N 123°17'12.5"W  
(See Chart 1, Q58) DFO(6205282-01)
- Add wreck, least depth unknown 49°04'34.2"N 123°20'22.8"W  
(See Chart 1, K29) DFO(6205288-01)

**3490 - Fraser River/Fleuve Fraser, Sand Heads to/à Douglas Island, Compartment A-B - New Edition - 02-NOV-2012 - World Geodetic System 1984**

03-OCT-2025

LNMD. 20-JUN-2025

- Add private white mooring lighted can buoy Fl 49°07'01.4"N 123°04'49.3"W  
(See Chart 1, Q41) DFO(6205261-01)

**3490 - Fraser River/Fleuve Fraser, Sand Heads to/à Douglas Island, Compartment B-C - New Edition - 02-NOV-2012 - World Geodetic System 1984**

17-OCT-2025

LNMD. 03-OCT-2025

- Amend F Y 29m to read F Y 27m against light 49°09'52.1"N 122°55'50.0"W  
(See Chart 1, P16) (P2025028) LL(363) DFO(6205272-01)
- Reposition light F Y 27m from 49°09'52.1"N 122°55'50.0"W  
(See Chart 1, P1) to 49°09'50.3"N 122°55'50.9"W  
DFO(6205272-02)
- Amend F Y 67m to read F Y 68m against light 49°09'43.9"N 122°55'54.2"W  
(See Chart 1, P16) (P2025029) LL(364) DFO(6205273-01)
- Add wharf joining 49°11'27.6"N 122°54'35.3"W  
(See Chart 1, F13) 49°11'28.1"N 122°54'37.2"W  
49°11'28.4"N 122°54'37.0"W  
49°11'28.6"N 122°54'37.7"W  
49°11'27.8"N 122°54'38.2"W  
49°11'27.6"N 122°54'37.5"W  
49°11'27.9"N 122°54'37.3"W  
and 49°11'27.4"N 122°54'35.5"W  
DFO(6205312-01)

**3491 - Compartment B-C - New Edition - 19-OCT-2012 - World Geodetic System 1984**

17-OCT-2025

LN/D. 24-MAY-2024

Amend	F Y 29m to read F Y 27m against light (See Chart 1, P16)	49°09'52.1"N 122°55'50.0"W  (P2025028) LL(363) DFO(6205272-01)
Reposition	light F Y 27m (See Chart 1, P1)	from 49°09'52.1"N 122°55'50.0"W to 49°09'50.3"N 122°55'50.9"W DFO(6205272-02)
Amend	F Y 67m to read F Y 68m against light (See Chart 1, P16)	49°09'43.9"N 122°55'54.2"W  (P2025029) LL(364) DFO(6205273-01)
Add	wharf (See Chart 1, F13)	joining 49°11'27.6"N 122°54'35.3"W 49°11'28.1"N 122°54'37.2"W 49°11'28.4"N 122°54'37.0"W 49°11'28.6"N 122°54'37.7"W 49°11'27.8"N 122°54'38.2"W 49°11'27.6"N 122°54'37.5"W 49°11'27.9"N 122°54'37.3"W and 49°11'27.4"N 122°54'35.5"W DFO(6205312-01)

**3492 - Roberts Bank - New Edition - 09-DEC-2011 - NAD 1983**

17-OCT-2025

LN/D. 28-FEB-2025

Add	private yellow ODAS/SADO lighted pillar buoy FI (5) Y (See Chart 1, Q58)	49°03'41.0"N 123°17'12.5"W  DFO(6205282-01)
-----	---	---

**3496 - Approaches to/Approches à Vancouver Harbour - New Chart - 29-MAR-2019 - World Geodetic System 1984**

03-OCT-2025

LN/D. 19-SEP-2025

Reposition	yellow traffic separation scheme lighted pillar buoy FI Y, marked QB (See Chart 1, Q61)	from 49°19'17.6"N 123°12'06.2"W to 49°19'17.4"N 123°12'06.8"W (P2025021) LL(388) DFO(6205242-01)
Delete	lighted offshore platform FI(5) Y20s(Priv) with legend Wave Energy Testing/Test d'énergie houlomotrice (See Chart 1, P2)	49°16'41.9"N 123°16'00.0"W  DFO(6205313-01)
17-OCT-2025		LN/D. 03-OCT-2025
Reposition	yellow traffic separation scheme lighted pillar buoy FI Y with racon, marked QA (See Chart 1, Q61, S3.6)	from 49°16'34.4"N 123°19'18.4"W to 49°16'31.6"N 123°19'13.8"W (P2025020) LL(385.5) DFO(6205241-01)
Add	private yellow ODAS/SADO lighted pillar FI (5) Y (See Chart 1, Q58)	49°16'46.9"N 123°16'33.6"W  DFO(6205320-02)
Add	private yellow ODAS/SADO lighted pillar FI (5) Y (See Chart 1, Q58)	49°19'51.2"N 123°12'14.0"W  DFO(6205320-03)

**3512 - Strait of Georgia, Central Portion/Partie Centrale - New Edition - 25-DEC-1998 - NAD 1983**

17-OCT-2025

LNMD. 25-APR-2025

Reposition yellow traffic separation scheme lighted pillar buoy FI Y with racon, from 49°16'34.4"N 123°19'18.4"W  
marked QA to 49°16'31.6"N 123°19'13.8"W  
(See Chart 1, Q61, S3.6)  
(P2025020) LL(385.5) DFO(6205241-01)

Add wreck showing a portion of superstructure 49°32'05.6"N 123°47'47.9"W  
(See Chart 1, K24)  
DFO(6205287-01)

**3538 - Desolation Sound and/et Sutil Channel - New Edition - 30-DEC-2005 - NAD 1983**

17-OCT-2025

LNMD. 12-SEP-2025

Add pontoon joining 50°07'23.2"N 125°03'32.2"W  
(See Chart 1, F16) 50°07'22.2"N 125°03'31.0"W  
50°07'22.7"N 125°03'29.9"W  
50°07'23.8"N 125°03'31.1"W  
and 50°07'24.7"N 125°03'28.6"W  
DFO(6205289-01)

24-OCT-2025 LNMD. 17-OCT-2025

Delete submarine cable between 50°01'13.8"N 125°11'52.4"W  
(See Chart 1, L30.1) and 50°01'30.0"N 125°13'05.0"W  
DFO(6205329-01)

**3539 - Discovery Passage - New Edition - 30-MAR-2007 - NAD 1983**

24-OCT-2025

LNMD. 09-MAY-2025

Delete submarine cable joining 50°01'13.8"N 125°11'52.4"W  
(See Chart 1, L30.1) 50°01'33.3"N 125°13'20.1"W  
50°01'32.4"N 125°13'35.3"W  
and 50°01'32.6"N 125°14'17.5"W  
DFO(6205329-01)

**3540 - Approaches to/Approches à Campbell River - New Edition - 09-SEP-2022 - World Geodetic System 1984**

24-OCT-2025

LNMD. 09-MAY-2025

Delete submarine cable joining 50°01'32.8"N 125°14'18.6"W  
(See Chart 1, L30.1) 50°01'32.3"N 125°13'28.0"W  
50°01'33.6"N 125°13'20.5"W  
50°01'30.0"N 125°13'05.0"W  
and 50°01'14.0"N 125°11'52.5"W  
DFO(6205329-01)

**3546 - Broughton Strait - New Edition - 15-APR-2005 - NAD 1983**

17-OCT-2025

LNMD. 22-AUG-2025

Delete pontoons between 50°35'21.5"N 127°03'09.0"W  
(See Chart 1, F16) and 50°35'19.7"N 127°03'09.0"W  
DFO(6205266-01)

Delete pontoons joining 50°35'23.6"N 127°03'00.4"W  
(See Chart 1, F16) 50°35'23.6"N 127°03'04.3"W  
and 50°35'19.3"N 127°03'04.3"W  
DFO(6205266-02)

**3547 - Queen Charlotte Strait Eastern Portion/Partie Est - New Chart - 28-APR-1989 - NAD 1983**

24-OCT-2025

LNMD. 22-AUG-2025

Add	label 'Booms/Pannes' (See Chart 1, F29.1)	50°47'14.5"N 126°41'33.9"W
		<i>DFO(6205315-01)</i>

**3549 - Queen Charlotte Strait Western Portion/Partie Ouest - New Chart - 03-DEC-1993 - NAD 1983**

17-OCT-2025

LNMD. 28-MAR-2025

Add	depth of 4.6 metres (See Chart 1, I10)	50°51'30.2"N 127°36'36.7"W
		<i>DFO(6205268-01)</i>

Add	private yellow ODAS/SADO lighted pillar Fl (5) Y (See Chart 1, Q58)	50°57'40.3"N 127°48'55.4"W
		<i>DFO(6205321-01)</i>

**3601 - Juan de Fuca Strait to/à Vancouver Harbour - New Edition - 01-JUL-2005 - NAD 1983**

17-OCT-2025

LNMD. 02-MAY-2025

Reposition	traffic separation scheme lighted pillar buoy with Racon (See Chart 1, Q61, S3.6)	from 49°16'34.4"N 123°19'18.4"W to 49°16'31.6"N 123°19'13.8"W (P2025020) LL(385.5) <i>DFO(6205241-01)</i>
------------	--	---

**3646 - Bamfield Inlet - New Edition - 30-JUN-1995 - NAD 1983**

24-OCT-2025

LNMD. 21-FEB-2025

Add	rock which covers and uncovers with drying height of 0.2 metres (See Chart 1, K11)	48°49'19.5"N 125°09'45.5"W
		<i>DFO(6205292-01)</i>

**3668 - Alberni Inlet - New Edition - 10-MAR-2023 - World Geodetic System 1984**

24-OCT-2025

LNMD. 21-FEB-2025

Add	depth of 0.5 metres (See Chart 1, I10)	48°53'08.1"N 125°04'37.7"W
		<i>DFO(6205334-01)</i>

Delete	depth of 0.6 metres (See Chart 1, I10)	48°53'03.4"N 125°02'53.0"W
		<i>DFO(6205334-02)</i>

Add	rock which covers and uncovers with drying height unknown (See Chart 1, K11)	48°53'03.6"N 125°02'52.5"W
		<i>DFO(6205334-03)</i>

**3671 - Barkley Sound - New Edition - 04-NOV-2005 - NAD 1983**

24-OCT-2025

LNMD. 19-SEP-2025

Add	depth of 0.5 metres (See Chart 1, I10)	48°53'08.1"N 125°04'37.7"W
		<i>DFO(6205334-01)</i>

Add	rock which covers and uncovers with drying height unknown (See Chart 1, K11)	48°53'03.6"N 125°02'52.5"W
		<i>DFO(6205334-03)</i>

**3683 - Checleset Bay - New Edition - 11-JUL-2003 - NAD 1983**

03-OCT-2025

LNMD. 21-MAR-2025

Delete	depth of 5¼ fathoms (See Chart 1, I10)	50°07'50.9"N 127°25'28.3"W  DFO(6205260-01)
Add	rock which covers and uncovers with drying height of 1 foot (See Chart 1, K11)	50°07'50.0"N 127°25'30.4"W  DFO(6205260-02)
Add	rock which covers and uncovers with drying height of 3 feet (See Chart 1, K11)	50°07'49.5"N 127°25'35.2"W  DFO(6205260-03)
Delete	depth of 3 fathoms (See Chart 1, I10)	50°07'38.4"N 127°26'01.5"W  DFO(6205260-04)
Delete	depth of 7½ fathoms (See Chart 1, I10)	50°07'38.7"N 127°26'04.5"W  DFO(6205260-05)
Add	depth of ¼ fathom (See Chart 1, I10)	50°07'39.3"N 127°26'02.1"W  DFO(6205260-06)

**3807 - Atli Inlet to/à Selwyn Inlet - New Edition - 05-FEB-1999 - NAD 1983**

17-OCT-2025

LNMD. 19-JUL-2024

Amend	FI 4s18m5M to read FI 4s17m5M against light (See Chart 1, P16)	52°54'42.9"N 131°32'24.3"W  (P2025031) LL(775) DFO(6205275-01)
Replace	Queen Charlotte Islands/Îles de la Reine-Charlotte to read Haida Gwaii	52°41'38.3"N 131°51'33.4"W DFO(6205314-01)
Replace	Queen Charlotte Islands/Îles de la Reine-Charlotte to read Haida Gwaii	outside south border at 131°23'00"W DFO(6205314-05)

**3825 - Cape St. James to/à Houston Stewart Channel - New Edition - 22-SEP-2006 - NAD 1983**

17-OCT-2025

LNMD. 26-NOV-2021

Replace	Queen Charlotte Islands/Îles de la Reine-Charlotte to read Haida Gwaii	51°55'02.5"N 131°12'30.1"W DFO(6205314-02)
Replace	Queen Charlotte Islands/Îles de la Reine-Charlotte to read Haida Gwaii	outside east border at 52°10'50"N DFO(6205314-08)

**3853 - Cape St. James to/à Cumshewa Inlet and/et Tasu Sound - New Edition - 02-MAR-1990 - NAD 1927**

17-OCT-2025

LNMD. 22-NOV-2024

Amend	FI 4s59ft5M to read FI 4s56ft5M against light (See Chart 1, P16)	52°54'43.7"N 131°32'18.3"W  (P2025031) LL(775) DFO(6205275-01)
Replace	in the title block, Queen Charlotte Islands/Îles de la Reine-Charlotte to read Haida Gwaii	outside north border at 131°30'01"W  DFO(6205314-01)
Replace	Queen Charlotte Islands/Îles de la Reine-Charlotte to read Haida Gwaii	outside east border at 53°07'00"N DFO(6205314-05)

**3854 - Tasu Sound to/à Port Louis - New Edition - 23-OCT-1987 - NAD 1927**

17-OCT-2025

LNMD. 11-APR-2025

Replace	Queen Charlotte Islands/Îles de la Reine-Charlotte to read Haida Gwaii	53°43'06.6"N 132°03'31.5"W DFO(6205314-03)
---------	--	---

Replace	Queen Charlotte Islands/Îles de la Reine-Charlotte to read Haida Gwaii	outside east border at 53°50'01"N DFO(6205314-04)
---------	--	--

**3857 - Louscoone Inlet - New Edition - 15-JUL-2005 - NAD 1983**

17-OCT-2025

LNMD. 29-NOV-2019

Replace	Queen Charlotte Islands/Îles de la Reine-Charlotte to read Haida Gwaii	52°14'10.1"N 131°11'25.3"W DFO(6205314-06)
---------	--	---

Replace	Queen Charlotte Islands/Îles de la Reine-Charlotte to read Haida Gwaii	outside east border at 52°13'36"N DFO(6205314-07)
---------	--	--

**3863 - Port Chanal - New Edition - 25-APR-1980 - NAD 1927**

17-OCT-2025

LNMD. 06-AUG-2021

Replace	Queen Charlotte Islands to read Haida Gwaii	53°38'25.2"N 132°50'34.3"W DFO(6205314-09)
---------	---	---

Replace	Queen Charlotte Islands to read Haida Gwaii	outside south border at 132°50'02"W DFO(6205314-10)
---------	---	--

**3868 - Port Louis to/à Langara Island - New Edition - 05-MAY-2006 - NAD 1983**

17-OCT-2025

LNMD. 16-MAY-2025

Replace	Queen Charlotte Islands/Îles de la Reine-Charlotte to read Haida Gwaii	53°51'56.7"N 133°29'56.7"W DFO(6205314-11)
---------	--	---

Replace	Queen Charlotte Islands/Îles de la Reine-Charlotte to read Haida Gwaii	outside east border at 54°14'47"N DFO(6205314-12)
---------	--	--

**3869 - Skidegate Channel to/à Tian Rock - New Edition - 28-NOV-1986 - Unknown**

17-OCT-2025

LNMD. 11-APR-2025

Replace	Queen Charlotte Islands/Îles de la Reine-Charlotte to read Haida Gwaii	53°46'06.0"N 132°40'01.7"W DFO(6205314-13)
---------	--	---

Replace	Queen Charlotte Islands/Îles de la Reine-Charlotte to read Haida Gwaii	outside east border at 53°46'00"N DFO(6205314-14)
---------	--	--

**3886 - Carpenter Bay to/à Burnaby Island - New Chart - 15-SEP-2023 - World Geodetic System 1984**

24-OCT-2025

LNMD. 19-JUL-2024

Reposition	green, red and green port bifurcation can buoy, marked CE (See Chart 1, Qf)	from 52°18'44.3"N 131°15'29.0"W to 52°18'45.3"N 131°15'14.3"W (P2025037) DFO(6205285-01)
------------	--	--

**3890 - Approaches to/Approches à Skidegate Inlet - New Chart - 14-MAR-1986 - NAD 1927**

17-OCT-2025

LNMD. 11-JUL-2025

Replace	Queen Charlotte Islands/Îles de la Reine-Charlotte to read Haida Gwaii	53°10'26.7"N 131°51'25.6"W DFO(6205314-15)
---------	--	---

Replace	Queen Charlotte Islands/Îles de la Reine-Charlotte to read Haida Gwaii	outside east border at 53°27'28"N DFO(6205314-16)
---------	--	--

Replace	Queen Charlotte to read Daajing Giids	53°06'37.9"N 131°53'10.2"W <i>DFO(6205314-17)</i>
Replace	Queen Charlotte to read Daajing Giids	53°08'45.4"N 131°51'25.4"W <i>DFO(6205314-22)</i>
Delete	tank (See Chart 1, E32)	53°15'17.4"N 131°49'11.2"W <i>DFO(6205319-01)</i>
Delete	ramp (See Chart 1, F17)	53°15'18.8"N 131°49'10.0"W <i>DFO(6205319-02)</i>
Delete	pier and label Public (See Chart 1, F14)	joining 53°15'16.9"N 131°49'16.6"W 53°15'16.9"N 131°49'18.0"W 53°15'15.8"N 131°49'18.0"W 53°15'15.8"N 131°49'16.6"W 53°15'16.9"N 131°49'16.6"W and 53°15'16.3"N 131°49'12.8"W <i>DFO(6205319-03)</i>
Delete	pier (See Chart 1, F14)	between 53°15'17.1"N 131°49'13.4"W and 53°15'17.4"N 131°49'16.5"W <i>DFO(6205319-04)</i>

**3892 - Masset Harbour and/et Naden Harbour - New Chart - 13-JAN-1984 - NAD 1927**  
17-OCT-2025

LNMD. 14-MAR-2025

Replace	Queen Charlotte Islands to read Haida Gwaii	54°02'28.5"N 132°26'47.6"W <i>DFO(6205314-18)</i>
Replace	Queen Charlotte Islands to read Haida Gwaii	outside south border at 132°06'25"W <i>DFO(6205314-19)</i>

**3893 - Masset Inlet - New Chart - 13-JAN-1984 - NAD 1927**  
17-OCT-2025

LNMD. 12-SEP-2025

Replace	Queen Charlotte Islands to read Haida Gwaii	outside south border at 132°04'19"W <i>DFO(6205314-04)</i>
Replace	Queen Charlotte Islands to read Haida Gwaii	53°48'51.8"N 132°39'10.0"W <i>DFO(6205314-13)</i>
Add	depth of 3.2 metres (See Chart 1, I10)	53°43'24.3"N 132°23'51.6"W <i>DFO(6205317-01)</i>
Add	depth of 2.7 metres (See Chart 1, I10)	53°43'19.3"N 132°24'02.2"W <i>DFO(6205317-02)</i>
Add	depth of 2.7 metres (See Chart 1, I10)	53°43'27.1"N 132°24'33.0"W <i>DFO(6205317-03)</i>
Replace	label Sewell for Sewall	53°45'50.7"N 132°17'43.7"W <i>DFO(6205317-04)</i>
Add	depth of 1.9 metres (See Chart 1, I10)	53°45'46.7"N 132°16'01.5"W <i>DFO(6205318-01)</i>



**3894 - Selwyn Inlet to/à Lawn Point - New Edition - 12-JUN-1998 - NAD 1983**

17-OCT-2025

LNMD. 31-MAR-2023

Amend	FI 4s18m5M to read FI 4s17m5M against light (See Chart 1, P16)	52°54'42.9"N 131°32'24.3"W (P2025031) LL(775) DFO(6205275-01)
Replace	Queen Charlotte Islands/Îles de la Reine-Charlotte to read Haida Gwaii	53°09'54.8"N 131°57'26.4"W DFO(6205314-15)
Replace	Queen Charlotte Islands/Îles de la Reine-Charlotte to read Haida Gwaii	outside east border at 53°22'39"N DFO(6205314-16)
Replace	Queen Charlotte city to read Daajing Giids	53°06'53.2"N 131°51'40.0"W DFO(6205314-17)
Replace	Queen Charlotte City to read Daajing Giids	53°07'04.4"N 131°57'26.8"W DFO(6205314-23)
Delete	tank (See Chart 1, E32)	53°15'16.5"N 131°49'17.4"W DFO(6205319-01)
Delete	ramp (See Chart 1, F17)	53°15'20.6"N 131°49'11.2"W DFO(6205319-02)
Delete	pier and label Public (See Chart 1, F14)	joining 53°15'15.8"N 131°49'19.5"W 53°15'16.3"N 131°49'23.3"W 53°15'15.3"N 131°49'23.3"W 53°15'15.3"N 131°49'24.6"W 53°15'16.3"N 131°49'24.6"W and 53°15'16.3"N 131°49'23.3"W DFO(6205319-03)

**3895 - Masset Harbour and Approaches/et les Approches - New Edition - 27-DEC-2002 - NAD 1983**

17-OCT-2025

LNMD. 14-MAR-2025

Replace	Queen Charlotte Islands/Îles de la Reine-Charlotte to read Haida Gwaii	between both plans in the title block DFO(6205314-20)
Replace	Queen Charlotte Islands/Îles de la Reine-Charlotte to read Haida Gwaii	outside south border at 132°09'05"W DFO(6205314-21)

**3908 - KITIMAT - NEW CHART - 15-MAR-2013 - NAD 1983**

17-OCT-2025

LNMD. 28-FEB-2025

Add	depth of 10.2 metres (See Chart 1, I10)	53°59'41.0"N 128°40'54.9"W DFO(6205269-01)
Add	depth of 10.8 metres (See Chart 1, I10)	53°59'39.6"N 128°40'54.8"W DFO(6205269-02)
Delete	depth of 0.9 metres (See Chart 1, I10)	53°59'31.2"N 128°40'30.4"W DFO(6205269-03)
Add	depth of 0.1 metres (See Chart 1, I10)	53°59'31.3"N 128°40'30.8"W DFO(6205269-04)

**3908 - Kitimat Harbour - New Chart - 15-MAR-2013 - NAD 1983**

17-OCT-2025

LNMD. 28-FEB-2025

Add	rock which covers and uncovers with drying height of 0.2 metres (See Chart 1, K11)	53°56'53.2"N 128°39'52.2"W <i>DFO(6205269-05)</i>
Add	rock awash at chart datum (See Chart 1, K12)	53°55'26.9"N 128°43'41.7"W <i>DFO(6205269-06)</i>
Add	depth of 2.3 metres (See Chart 1, I10)	53°54'17.1"N 128°45'44.2"W <i>DFO(6205269-07)</i>
Add	rock which covers and uncovers with drying height of 0.9 metres (See Chart 1, K11)	53°54'22.9"N 128°41'01.7"W <i>DFO(6205269-08)</i>

**3910 - Entrance to/Entrée à Mathieson Channel - New Edition - 11-SEP-2020 - World Geodetic System 1984**

17-OCT-2025

LNMD. 20-JUN-2025

Delete	depth of 5.0 metres (See Chart 1, I10)	52°17'41.6"N 128°22'15.3"W <i>DFO(6205311-01)</i>
Add	depth of 4.5 metres (See Chart 1, I10)	52°17'41.4"N 128°22'15.6"W <i>DFO(6205311-02)</i>
Add	depth of 4.7 metres (See Chart 1, I10)	52°18'44.6"N 128°21'13.5"W <i>DFO(6205311-03)</i>
Delete	depth of 3.9 metres (See Chart 1, I10)	52°18'47.8"N 128°21'36.8"W <i>DFO(6205311-04)</i>
Add	depth of 3.7 metres (See Chart 1, I10)	52°18'47.7"N 128°21'37.3"W <i>DFO(6205311-05)</i>
Delete	depth of 3.6 metres (See Chart 1, I10)	52°18'53.6"N 128°21'33.5"W <i>DFO(6205311-06)</i>
Add	depth of 2.7 metres (See Chart 1, I10)	52°18'53.0"N 128°21'33.5"W <i>DFO(6205311-07)</i>

**3933 - Portland Canal and/or Observatory Inlet - New Edition - 20-JAN-1989 - NAD 1927**

24-OCT-2025

LNMD. 24-DEC-2021

Delete	depth of 5 fathoms 5 feet (See Chart 1, I10)	55°02'01.8"N 130°11'33.9"W <i>DFO(6205335-01)</i>
Add	depth of 2 fathoms 4 feet (See Chart 1, I10)	55°02'05.2"N 130°11'37.1"W <i>DFO(6205335-02)</i>

**3941 - Channels/Chenaux Vicinity of/Proximité de Milbanke Sound - New Edition - 01-AUG-2014 - NAD 1983**

17-OCT-2025

LNM/D. 17-FEB-2023

Delete	depth of 5.0 metres (See Chart 1, I10)	52°17'41.6"N 128°22'15.3"W <i>DFO(6205311-01)</i>
Add	depth of 4.5 metres (See Chart 1, I10)	52°17'41.4"N 128°22'15.6"W <i>DFO(6205311-02)</i>
Delete	depth of 3.9 metres (See Chart 1, I10)	52°18'47.8"N 128°21'36.8"W <i>DFO(6205311-04)</i>
Add	depth of 3.7 metres (See Chart 1, I10)	52°18'47.7"N 128°21'37.3"W <i>DFO(6205311-05)</i>
Delete	depth of 3.6 metres (See Chart 1, I10)	52°18'53.6"N 128°21'33.5"W <i>DFO(6205311-06)</i>
Add	depth of 2.7 metres (See Chart 1, I10)	52°18'53.0"N 128°21'33.5"W <i>DFO(6205311-07)</i>

**3955 - Porpoise Harbour, Ridley Island and Approaches/et les Approches - New Edition - 29-APR-2022 - World Geodetic System 1984**

24-OCT-2025

LNM/D. 05-JAN-2024

Reposition	green port hand pillar buoy, marked D33 (See Chart 1, Qc)	from 54°13'22.0"N 130°17'53.2"W to 54°13'22.0"N 130°17'55.0"W (P2025027) <i>DFO(6205257-01)</i>
Add	depth of 0.1 metres (See Chart 1, I10)	54°12'04.2"N 130°18'16.7"W <i>DFO(6205290-01)</i>
Delete	depth of 2.4 metres (See Chart 1, I10)	54°12'11.2"N 130°18'06.9"W <i>DFO(6205290-02)</i>
Add	depth of 1.3 metres (See Chart 1, I10)	54°12'11.2"N 130°18'06.9"W <i>DFO(6205290-03)</i>
Delete	depth of 3.4 metres (See Chart 1, I10)	54°12'13.8"N 130°18'03.3"W <i>DFO(6205290-04)</i>
Add	depth of 2.5 metres (See Chart 1, I10)	54°12'13.7"N 130°18'03.2"W <i>DFO(6205290-05)</i>
Amend	7.2 metres to read 6.9 metres against wreck (See Chart 1, K26)	54°12'19.1"N 130°18'09.0"W <i>DFO(6205290-06)</i>
Delete	depth of 0.8 metres (See Chart 1, I10)	54°12'40.5"N 130°17'34.0"W <i>DFO(6205290-07)</i>

Add	rock which covers and uncovers with drying height of 1.9 metres (See Chart 1, K11)	54°12'40.5"N 130°17'33.7"W <i>DFO(6205290-08)</i>
Add	rock which covers and uncovers with drying height of 0.6 metres (See Chart 1, K11)	54°12'41.3"N 130°17'33.0"W <i>DFO(6205290-09)</i>
Delete	depth of 3.8 metres (See Chart 1, I10)	54°12'42.7"N 130°17'33.3"W <i>DFO(6205290-10)</i>
Add	depth of 3.0 metres (See Chart 1, I10)	54°12'42.6"N 130°17'33.4"W <i>DFO(6205290-11)</i>
Delete	depth of 1.6 metres (See Chart 1, I10)	54°12'47.6"N 130°17'38.7"W <i>DFO(6205290-12)</i>
Add	depth of 1.0 metre (See Chart 1, I10)	54°12'47.5"N 130°17'38.7"W <i>DFO(6205290-13)</i>
Add	private yellow ODAS/SADO lighted pillar FI (5) Y (See Chart 1, Q58)	54°11'19.3"N 130°20'18.2"W <i>DFO(6205323-04)</i>
Add	private yellow ODAS/SADO lighted pillar FI (5) Y (See Chart 1, Q58)	54°11'53.5"N 130°18'29.9"W <i>DFO(6205323-05)</i>

**3956 - Malacca Passage to/à Bell Passage - New Edition - 13-JAN-2017 - World Geodetic System 1984**

24-OCT-2025

LNM/D. 22-NOV-2024

Reposition	green port hand pillar buoy (See Chart 1, Qc)	from 54°13'22.0"N 130°17'53.2"W to 54°13'22.0"N 130°17'55.0"W (P2025027) <i>DFO(6205257-01)</i>
------------	--	---

**3957 - Approaches to/Approches à Prince Rupert Harbour - New Edition - 07-OCT-2016 - World Geodetic System 1984**

24-OCT-2025

LNM/D. 08-AUG-2025

Reposition	green port hand pillar buoy (See Chart 1, Qc)	from 54°13'22.0"N 130°17'53.2"W to 54°13'22.0"N 130°17'55.0"W (P2025027) <i>DFO(6205257-01)</i>
Add	private yellow ODAS/SADO lighted pillar FI (5) Y (See Chart 1, Q58)	54°18'07.5"N 130°55'13.1"W <i>DFO(6205323-01)</i>
Add	private yellow ODAS/SADO lighted pillar FI (5) Y (See Chart 1, Q58)	54°18'04.7"N 130°48'09.4"W <i>DFO(6205323-02)</i>
Add	private yellow ODAS/SADO lighted pillar FI (5) Y (See Chart 1, Q58)	54°16'55.9"N 130°47'28.0"W <i>DFO(6205323-03)</i>

**3958 - Prince Rupert Harbour - New Edition - 13-DEC-2013 - World Geodetic System 1984**

24-OCT-2025

LNMD/D. 06-JUN-2025

Reposition	green port hand pillar buoy, marked D33 (See Chart 1, Qc)	from 54°13'22.0"N 130°17'53.2"W to 54°13'22.0"N 130°17'55.0"W (P2025027) DFO(6205257-01)
Amend	7.0 metres to read 6.9 metres against wreck (See Chart 1, K26)	54°12'19.1"N 130°18'09.0"W  DFO(6205290-06)
Add	rock which covers and uncovers with drying height of 1.9 metres (See Chart 1, K11)	54°12'40.5"N 130°17'33.7"W  DFO(6205290-08)
Delete	depth of 10.2 metres (See Chart 1, I10)	54°18'42.3"N 130°20'08.4"W  DFO(6205293-01)
Add	depth of 2.6 metres (See Chart 1, I10)	54°18'42.2"N 130°20'07.3"W  DFO(6205293-03)
Delete	depth of 9.1 metres (See Chart 1, I10)	54°18'47.2"N 130°19'59.9"W  DFO(6205293-04)
Add	depth of 4.1 metres (See Chart 1, I10)	54°18'46.9"N 130°20'00.3"W  DFO(6205293-05)
Add	depth of 2.2 metres (See Chart 1, I10)	54°20'06.0"N 130°18'45.5"W  DFO(6205293-06)
Add	depth of 2.1 metres (See Chart 1, I10)	54°20'04.8"N 130°19'23.0"W  DFO(6205293-07)
Delete	depth of 9.1 metres (See Chart 1, I10)	54°19'55.4"N 130°19'33.8"W  DFO(6205293-08)
Add	depth of 2.0 metres (See Chart 1, I10)	54°19'55.8"N 130°19'34.0"W  DFO(6205293-09)
Delete	depth of 7.0 metres (See Chart 1, I10)	54°19'38.5"N 130°20'22.6"W  DFO(6205293-10)
Add	depth of 2.2 metres (See Chart 1, I10)	54°19'38.4"N 130°20'23.6"W  DFO(6205293-11)
Add	depth of 1.9 metres (See Chart 1, I10)	54°19'17.1"N 130°21'31.8"W  DFO(6205293-12)

Add	depth of 1.3 metres (See Chart 1, I10)	54°19'11.1"N 130°22'05.3"W <i>DFO(6205293-13)</i>
Delete	depth of 2.7 metres (See Chart 1, I10)	54°19'10.4"N 130°22'13.1"W <i>DFO(6205293-14)</i>
Add	depth of 1.5 metres (See Chart 1, I10)	54°19'09.7"N 130°22'14.8"W <i>DFO(6205293-15)</i>
Add	depth of 2.9 metres (See Chart 1, I10)	54°19'02.3"N 130°22'17.6"W <i>DFO(6205293-16)</i>
Delete	Booms/Pannes	54°19'59.5"N 130°19'23.8"W <i>DFO(6205293-17)</i>
Add	depth of 3.1 metres (See Chart 1, I10)	54°20'04.5"N 130°17'05.5"W <i>DFO(6205316-01)</i>
Add	rock which covers and uncovers with drying height of 0.6 metres (See Chart 1, K11)	54°20'46.6"N 130°17'23.0"W <i>DFO(6205316-02)</i>
Add	depth of 0.1 metres (See Chart 1, I10)	54°20'49.0"N 130°17'17.8"W <i>DFO(6205316-03)</i>
Add	private yellow ODAS/SADO lighted pillar Fl (5) Y (See Chart 1, Q58)	54°11'19.3"N 130°20'18.2"W <i>DFO(6205323-04)</i>
Add	private yellow ODAS/SADO lighted pillar Fl (5) Y (See Chart 1, Q58)	54°11'53.5"N 130°18'29.9"W <i>DFO(6205323-05)</i>
<b>3959 - Hudson Bay Passage - New Chart - 11-DEC-1987 - NAD 1983</b> 17-OCT-2025		LN/D. 08-AUG-2025
Add	rock which covers and uncovers with drying height unknown (See Chart 1, K11)	54°33'39.2"N 130°45'53.4"W <i>DFO(6205291-01)</i>
Delete	depth of 8.8 metres (See Chart 1, I10)	54°24'04.1"N 130°46'20.2"W <i>DFO(6205327-01)</i>
Add	depth of 2.1 metres (See Chart 1, I10)	54°24'03.7"N 130°46'19.5"W <i>DFO(6205327-02)</i>
Add	depth of 1.1 metres (See Chart 1, I10)	54°24'50.5"N 130°45'11.1"W <i>DFO(6205327-03)</i>

Add	depth of 1.1 metres (See Chart 1, I10)	54°24'51.3"N 130°45'05.3"W <i>DFO(6205327-04)</i>
Add	rock which covers and uncovers with drying height unknown (See Chart 1, K11)	54°24'43.2"N 130°44'21.5"W <i>DFO(6205327-05)</i>
Add	depth of 1.5 metres (See Chart 1, I10)	54°24'48.4"N 130°44'07.0"W <i>DFO(6205327-06)</i>
Delete	depth of 6.4 metres (See Chart 1, I10)	54°24'48.6"N 130°44'00.0"W <i>DFO(6205327-07)</i>
Add	rock awash at chart datum (See Chart 1, K12)	54°24'48.4"N 130°44'02.1"W <i>DFO(6205327-08)</i>

**3960 - Approaches to/Approches à Portland Inlet - New Chart - 13-AUG-1993 - NAD 1983**  
17-OCT-2025

LNMD. 25-DEC-2020

Add	rock which covers and uncovers with drying height unknown (See Chart 1, K11)	54°33'39.2"N 130°45'53.4"W <i>DFO(6205291-01)</i>
-----	---	--

**3964 - Tuck Inlet - New Edition - 30-APR-1999 - NAD 1983**  
24-OCT-2025

LNMD. 13-DEC-2024

Delete	depth of 11 metres (See Chart 1, I10)	54°18'42.4"N 130°20'08.4"W <i>DFO(6205293-02)</i>
Add	depth of 2.6 metres (See Chart 1, I10)	54°18'42.2"N 130°20'07.3"W <i>DFO(6205293-03)</i>
Delete	depth of 9.1 metres (See Chart 1, I10)	54°18'47.2"N 130°19'59.9"W <i>DFO(6205293-04)</i>
Add	depth of 4.1 metres (See Chart 1, I10)	54°18'46.9"N 130°20'00.3"W <i>DFO(6205293-05)</i>
Add	depth of 2.2 metres (See Chart 1, I10)	54°20'06.0"N 130°18'45.5"W <i>DFO(6205293-06)</i>
Add	depth of 2.1 metres (See Chart 1, I10)	54°20'04.8"N 130°19'23.0"W <i>DFO(6205293-07)</i>
Delete	depth of 9.1 metres (See Chart 1, I10)	54°19'55.4"N 130°19'33.8"W <i>DFO(6205293-08)</i>

Add	depth of 2.0 metres (See Chart 1, I10)	54°19'55.8"N 130°19'34.0"W <i>DFO(6205293-09)</i>
Delete	depth of 7.0 metres (See Chart 1, I10)	54°19'38.5"N 130°20'22.6"W <i>DFO(6205293-10)</i>
Add	depth of 2.2 metres (See Chart 1, I10)	54°19'38.4"N 130°20'23.6"W <i>DFO(6205293-11)</i>
Add	depth of 1.9 metres (See Chart 1, I10)	54°19'17.1"N 130°21'31.8"W <i>DFO(6205293-12)</i>
Add	depth of 1.3 metres (See Chart 1, I10)	54°19'11.1"N 130°22'05.3"W <i>DFO(6205293-13)</i>
Delete	depth of 2.7 metres (See Chart 1, I10)	54°19'10.4"N 130°22'13.1"W <i>DFO(6205293-14)</i>
Add	depth of 1.5 metres (See Chart 1, I10)	54°19'09.7"N 130°22'14.8"W <i>DFO(6205293-15)</i>
Add	depth of 2.9 metres (See Chart 1, I10)	54°19'02.3"N 130°22'17.6"W <i>DFO(6205293-16)</i>
Delete	Booms/Pannes	54°19'59.5"N 130°19'23.8"W <i>DFO(6205293-17)</i>
Add	depth of 3.1 metres (See Chart 1, I10)	54°20'04.5"N 130°17'05.5"W <i>DFO(6205316-01)</i>
Add	rock which covers and uncovers with drying height of 0.6 metres (See Chart 1, K11)	54°20'46.6"N 130°17'23.0"W <i>DFO(6205316-02)</i>
Add	depth of 0.1 metres (See Chart 1, I10)	54°20'49.0"N 130°17'17.8"W <i>DFO(6205316-03)</i>
Add	depth of 1.7 metres (See Chart 1, I10)	54°21'40.3"N 130°15'35.8"W <i>DFO(6205316-04)</i>
Add	depth of 2.0 metres (See Chart 1, I10)	54°22'00.5"N 130°16'27.1"W <i>DFO(6205316-05)</i>

**3975 - Caamaño Sound and Approaches/et les approches - New Chart - 28-SEP-2018 - World Geodetic System 1984**

17-OCT-2025

LNM/D. 16-MAY-2025

Affix patch  
Download Patch - [https://www.notmar.gc.ca/chsftp/patches/3975\\_6205325\\_1\\_202509171757.pdf](https://www.notmar.gc.ca/chsftp/patches/3975_6205325_1_202509171757.pdf)  
*DFO(6205325-01)*



**3980 - Laredo Sound - New Chart - 13-JAN-2017 - World Geodetic System 1984**

17-OCT-2025

LNMD/D. 20-JUN-2025

Affix patch 52°32'35.2"N 128°45'37.1"W  
Download Patch - [https://www.notmar.gc.ca/chsftp/patches/3980\\_6205325\\_1\\_202509171757.pdf](https://www.notmar.gc.ca/chsftp/patches/3980_6205325_1_202509171757.pdf)  
DFO(6205325-01)

**6201 - Lake of the Woods / Lac des Bois - Sheet/Feuille 1 - New Edition - 09-AUG-2002 - NAD 1983**

10-OCT-2025

LNMD/D. 09-JAN-2009

Delete light, marked FI 49°12'46.0"N 094°56'45.0"W  
(See Chart 1, P1)  
LL(16963) DFO(6605549-01)

**6211 - Big Traverse Bay - New Edition - 28-FEB-2020 - NAD 1983**

10-OCT-2025

LNMD/D. 01-OCT-2021

Delete light, marked FI 6s 35ft 49°12'46.0"N 094°56'45.0"W  
(See Chart 1, P1)  
LL(16963) DFO(6605549-01)

**6215 - Basil Channel to/à Sturgeon Channel - New Edition - 28-FEB-2020 - NAD 1983**

10-OCT-2025

LNMD/D. 15-NOV-2024

Delete light, marked FI 6s 35ft 49°12'46.0"N 094°56'45.0"W  
(See Chart 1, P1)  
LL(16963) DFO(6605549-01)

**7502 - Gulf of Boothia and/et Committee Bay - New Edition - 31-JUL-1998 - NAD 1983**

10-OCT-2025

LNMD/D. 05-JUL-2019

Delete depth of 12 metres 69°11'52.2"N 089°32'45.7"W  
(See Chart 1, I10)  
This notice affects Electronic Navigational Chart: CA373504  
DFO(6605552-02)

Add obstruction with known depth of 6.8 metres 69°11'23.0"N 089°32'42.0"W  
(See Chart 1, K41)  
This notice affects Electronic Navigational Chart: CA373504  
DFO(6605552-03)

**7521 - Prince of Wales Strait - New Chart - 01-JUN-1984 - Unknown**

17-OCT-2025

LNMD/D. 07-SEP-1990

Delete depth of 81 metres 71°22'42.2"N 117°00'58.3"W  
(See Chart 1, I10)  
DFO(6605553-01)

Add obstruction, depth unknown, Rep (2025) 71°22'36.8"N 117°01'20.6"W  
(See Chart 1, K40)  
DFO(6605553-02)

Add obstruction, depth unknown, Rep (2025) 71°22'29.0"N 116°57'45.5"W  
(See Chart 1, K40)  
DFO(6605553-03)

**7573 - M'Clintock Channel, Larsen Sound and/et Franklin Strait - New Chart - 25-FEB-2000 - NAD 1983**

31-OCT-2025

LNMD/D. 25-OCT-2024

Delete depth of 42 metres 71°21'05.5"N 096°54'46.6"W  
(See Chart 1, I10)  
DFO(6605564-01)

Add	obstruction with known depth of 6.4 metres Rep (2025) (See Chart 1, K41)	71°21'03.7"N 096°53'52.6"W
		<i>DFO(6605564-02)</i>

Add	obstruction with known depth of 21.7 metres Rep (2025) (See Chart 1, K41)	71°20'38.2"N 096°55'33.9"W
		<i>DFO(6605564-03)</i>

**7575 - Peel Sound and/et Prince Regent Inlet - New Edition - 14-OCT-2022 - World Geodetic System 1984**

31-OCT-2025

LNM/D. 25-OCT-2024

Add	obstruction with known depth of 6.4 metres Rep (2025) (See Chart 1, K41)	71°21'03.7"N 096°53'52.6"W
		<i>DFO(6605564-02)</i>

Add	obstruction with known depth of 21.7 metres Rep (2025) (See Chart 1, K41)	71°20'38.2"N 096°55'33.9"W
		<i>DFO(6605564-03)</i>

**7578 - Pelly Bay - New Edition - 26-AUG-2022 - World Geodetic System 1984**

10-OCT-2025

Delete	depth of 15 metres (See Chart 1, I10) This notice affects Electronic Navigational Chart: CA373504	69°11'19.1"N 089°32'22.2"W
		<i>DFO(6605552-01)</i>

Add	obstruction with known depth of 6.8 metres (See Chart 1, K41) This notice affects Electronic Navigational Chart: CA373504	69°11'23.0"N 089°32'42.0"W
		<i>DFO(6605552-03)</i>

**7621 - Amundsen Gulf - New Edition - 25-FEB-2022 - NAD 1983**

17-OCT-2025

LNM/D. 12-SEP-2025

Delete	depth of 81 metres (See Chart 1, I10)	71°22'42.2"N 117°00'58.3"W
		<i>DFO(6605553-01)</i>

Add	obstruction, depth unknown, Rep (2025) (See Chart 1, K40)	71°22'36.8"N 117°01'20.6"W
		<i>DFO(6605553-02)</i>

Add	obstruction, depth unknown, Rep (2025) (See Chart 1, K40)	71°22'29.0"N 116°57'45.5"W
		<i>DFO(6605553-03)</i>

**7950 - Jones Sound, Norwegian Bay and Queens Channel - New Edition - 21-JUN-2013 - NAD 1983**

31-OCT-2025

LNM/D. 21-FEB-2025

Add	obstruction with known depth of 20.7 metres (See Chart 1, K41)	77°27'40.0"N 093°03'15.8"W
		<i>DFO(6605567-01)</i>

### **Section 3: Radio Aids to Marine Navigation Corrections**

---

No corrections for this section.

## Section 4: Canadian Sailing Directions Corrections

---

The following **Canadian Sailing Directions** volumes have recently been updated on the [Canadian Hydrographic Service website](#).

No.	Title
<b>Atlantic Coast</b>	
<b>ATL 108</b>	Gulf of St. Lawrence (Southwest Portion)
<b>Central Canada</b>	
<b>CEN 300</b>	General Information, Great Lakes
<b>CEN 302</b>	Lake Ontario
<b>CEN 309</b>	Trent-Severn Waterway
<b>Northern Canada</b>	
<b>ARC 404</b>	Great Slave Lake and Mackenzie River

Each volume includes a section entitled “Record of Changes” which lists all updates that are incorporated during the current calendar year.

## Section 5: List of Lights, Buoys and Fog Signals Corrections

The amendments are **highlighted** and deletions are **crossed out**. For general and region-specific information on the List of Lights, click on the following links: [Newfoundland and Labrador Coast](#), [Atlantic Coast](#), [Inland Waters](#) and [Pacific Coast](#).

No.	Name	Position ----- Latitude N. Longitude W.	Light Characteristics	Focal Height in m. above water	Nomi- nal Range	Description ----- Height in meters above ground	Remarks ----- Fog Signals
-----	------	--	--------------------------	--	-----------------------	--	---------------------------------

### PACIFIC COAST

#### VANCOUVER HARBOUR (LL 385.3 – 416.5)

410.7	Berry Point range	On N. extremity of point. 49 17 45.2 122 59 24.9	F Y .....	11	Square skeleton tower, white daymark with red vertical stripe.	Private aid. Radar reflector. Operates 24 h. Year round.
410.8		87° 05' 300 m from front	F Y .....	12	Square skeleton tower, white daymark with red vertical stripe.	Private aid. Radar reflector. Operates 24 h. Year round.
Chart:3494 Edn 10/25 (P25-060, 061)						
411.2	Berry Point 1	On N. extremity of point, attached to front range tower. 49 17 45.2 122 59 24.9	Fl R 4s .....	7	Square skeleton tower.	Private aid. Obscured from 083° through E. to 091°. Secondary light. Year round.
Chart:3494 Edn 10/25 (P25-062)						
411.3	Berry Point 1A	On N. extremity of point, attached to rear range tower. 49 17 45.7 122 59 10.0	Fl R 4s 4.0	7	Square skeleton tower.	Private aid. Obscured from 083° through E. to 091°. Year round.
Chart:3494 Edn 10/25 (P25-058)						
411.4	Berry Point Sector Light	On N. extremity of point, attached to rear range tower. 49 17 45.7 122 59 10.0	F R W G .....	9	Square skeleton tower.	Private aid. Red from 086.10° to 086.60°; Oc RW from 086.60° to 086.90°; white from 086.90° to 087.20°; Oc GW from 087.20° to 087.50°; green from 087.50° to 088.00°. Radar reflector. Year round.
Chart:3494 Edn 10/25 (P25-059)						